

E2 Browser



Nikon

User's Manual
For Macintosh

E2 Browser

Nikon Corporation

*Electronic Image Engineering Division
Fuji Bldg., 2-3 Marunouchi 3-chome,
Chiyoda-ku, Tokyo 100, Japan*

6ME40500

Printed in Japan (95.4)

Nikon

E2 Browser for Macintosh

User's Manual

Introduction

Thank you for purchasing the Nikon E2 Browser for Macintosh. This manual explains how to install the software and how to use it. Please read this manual thoroughly to ensure a good understanding of its contents.

Cautions

- The reproduction of all or part of this manual without permission is prohibited.
- The information contained in this manual is subject to change without notice.
- We have made every effort to produce an accurate manual, but should you find any mistakes, we would be grateful if you would kindly let us know.
- We shall take no responsibility for consequences resulting from the operation of this product, despite the terms mentioned above.

Trademark Information

Apple, Apple logo, Macintosh and QuickTime are registered trademarks of Apple Computer, Inc.

Adobe and Adobe Photoshop are trademarks of Adobe Systems Incorporated.

Other brand or product names are the trademarks or registered trademarks of their respective holders.

Table of Contents

1. E2 Browser Functions	1
2. Package Contents	1
3. System Requirements	2
4. Installation	3
5. Main Dialog Box	10
5.1 Starting-up the Browser	10
5.2 Selecting images	11
5.3 Quitting the Browser	11
5.4 Main dialog functions	12
5.5 Icon buttons	13

Table of Contents

6. E2 Browser Operation	14
6.1 Displaying images	14
6.2 Saving images	15
6.3 Deleting images	17
6.4 Attribute information	19
6.5 Delivering images to other applications	20
6.6 Preferences	21
6.7 Refreshing the thumbnail images	24
6.8 About dialog	24
7. Troubleshooting	25
Index	27

1. E2 Browser Functions

The E2 Browser for Macintosh makes it possible to transfer to Macintosh computers images recorded on image memory cards using the Nikon E2/E2s digital still camera. Images recorded by the E2/E2s can be read using a PC card drive.

The E2 Browser supports the following functions:

- thumbnail listing of all images stored in an image memory card
- display of image attribute information
- transfer of image files from image memory cards to local disk, where they can be saved for future reference
- deletion of image files from image memory cards
- multi-display support
- storage of image files
- delivery of selected images to other applications which support AppleEvents and JPEG and PICT formats (these applications can be started from within the browser)
- support of uncompressed images

2. Package Contents

The E2 Browser for Macintosh package contains the items listed below. Check that nothing is missing from your package. If there are any items missing, please contact your dealer immediately.

- User's manual (1)
- Install disk (1)

3. System Requirements

In order to operate the E2 Browser for Macintosh, the following system environment and software are necessary:

- a Macintosh or Powerbook running System 7.1 and with a 68030 CPU or greater, or a Power Macintosh running System 7.1.2 or later
- 2MB memory minimum (over 10MB is recommended)
If other applications are to be launched from the browser, there must be enough free memory to support these applications while the browser is running.
- 5MB minimum available hard-disk space (over 40MB is recommended)
Note that applications launched from the browser may require additional working hard-disk space.
- a monitor of 640 x 480 pixels or more and which supports 16.7 million, 64K, 32K, or 256 colors, or 256-shade or 16-shade gray scale (16.7 million colors are recommended)
- a Nikon ED-10 PC card drive
- QuickTime Version 2.0 (included in the install disk)
- Mac-PC Manager (included with the Nikon ED-10 PC card drive)
Note: *When using the E2 Browser, release the card's write-protection switch.*
Note: *If too many images are recorded and there is no space left on your memory card, E2 Browser cannot display thumbnail images. In this case, delete some images before starting E2 Browser.*
- an application to which images can be delivered
(any application, such as Adobe Photoshop, which supports AppleEvent and JPEG and PICT formats)

4. Installation

Confirm the following items before installing the Nikon E2 Browser software for Macintosh.

- Protect the Install disk.
- Turn off any virus-checking software. If this is on, installation may not complete successfully. In order to turn off the virus checking software, first drag the virus checking software out of the Extensions folder and then restart the Macintosh.

4. Installation

After confirming the above items, install the Browser as explained in the following steps.

Step 1

Insert the Install disk into the floppy disk drive and double click the installer icon.

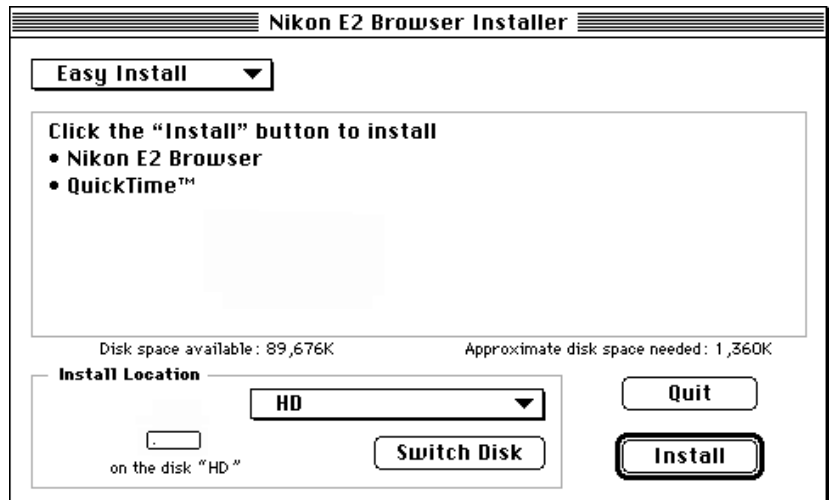


The following dialog will appear.



Step 2

Click “Continue...” . A message dialog will appear; click it. The Nikon E2 Browser Installer menu will then appear.



If QuickTime 2.0 has already been installed, choose “Custom Install” from the pull-down menu near the upper-left corner of the menu to install only the E2 Browser. Move to Step 3. (When QuickTime 1.6 or lower has been installed, you must install QuickTime 2.0 .)

When installing both the E2 Browser and QuickTime 2.0, choose “Easy Install” from the pull-down menu. After QuickTime has been installed, it will be necessary to restart the computer. The following dialog will appear when the Install button is clicked.

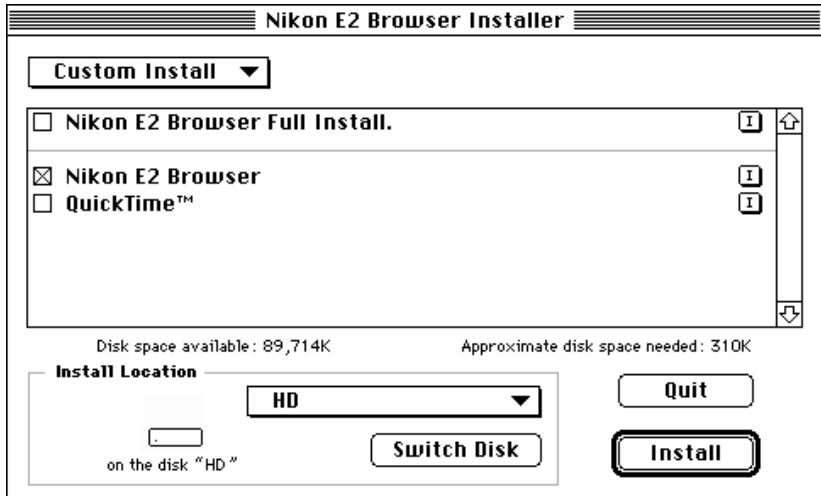


Click “Continue” to advance to Step 4.

4. Installation

Step 3

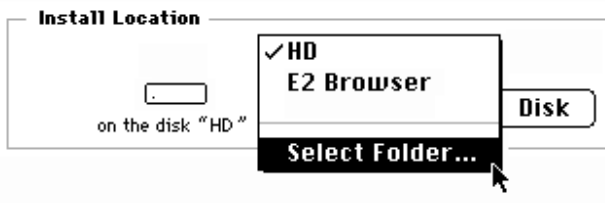
If you choose “Custom Install” in Step 2, the following menu appears.



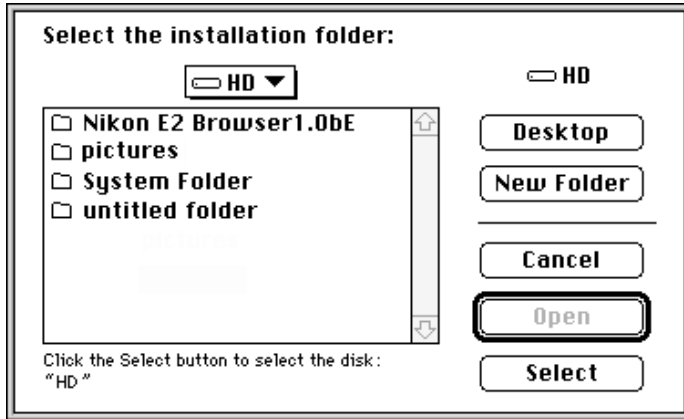
Check “Nikon E2 Browser” and click “Install”. Only the E2 Browser will be installed.

Step 4

You can select a folder for installation by choosing “Select Folder...” from the pull-down menu in the Install Location box.



The folder menu appears.



Select a folder and click "Install" to start the installation. The following message is displayed during the installation process.

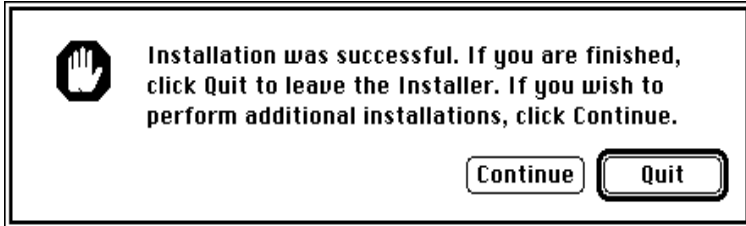


4. Installation

Step 5

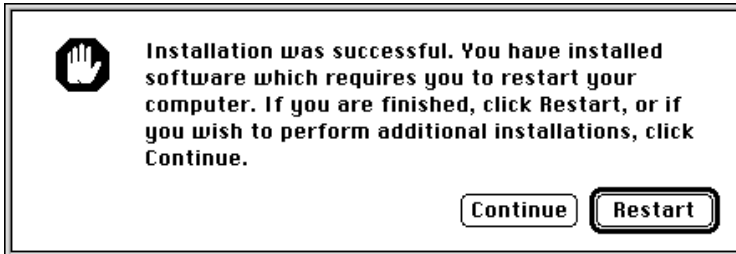
When the installation finishes normally, one of the following messages will be displayed.

When you did not install QuickTime 2.0:



Click "Quit" to finish the installation.

When you have installed QuickTime 2.0:



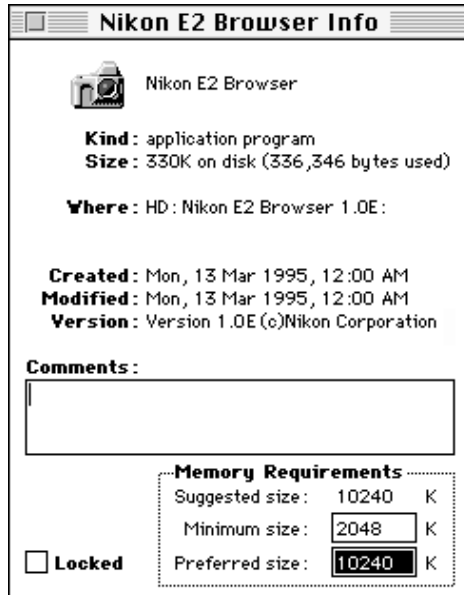
Click "Restart" to restart the Macintosh.

Step 6

After the installation has been completed, click the E2 Browser icon once to select it and then choose “Get Info” from the File menu.



If possible, enter the value equal to or greater than the “Suggested size” in the “Preferred size” text box. If the memory allocated is less than the suggested value, the E2 Browser will not be able to support non-compressed images or the PICT format.



5. Main Dialog Box

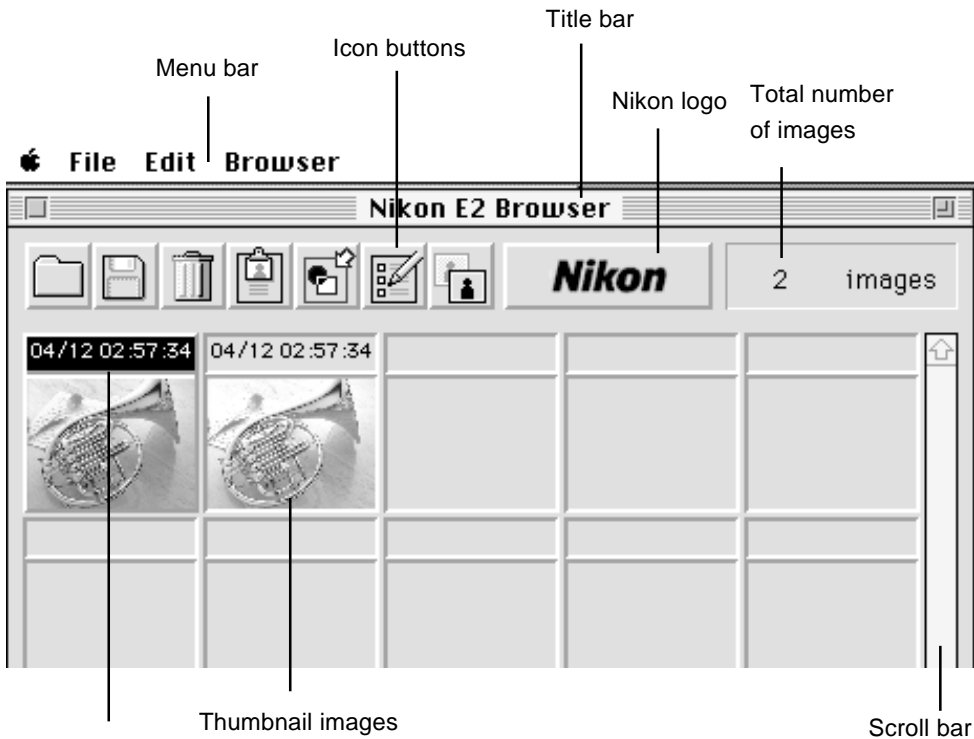


Nikon E2 Browser

5.1 Starting-up the Browser

Double-click the E2 Browser icon to start the browser. The Main dialog box will appear.

When you first start the E2 Browser after installation, thumbnail images will not be displayed. Refer to Section 6.1 for information on selecting an image folder to be displayed.



Month/Day Hour/Minute/Second

The maximum number of images which can be displayed in the window at one time depends on the size of the monitor. If the monitor is larger than 800 x 600 pixels, up to 30 thumbnail images can be displayed. Otherwise, a maximum 20 thumbnail images can be displayed.

5.2 Selecting images

Click a thumbnail image once to select it.

To cancel the selection, click the selected thumbnail image again while pressing the shift key, or click another thumbnail image.

To select two or more thumbnail images, click each image in succession while pressing the shift key.

To select all thumbnail images, pull down the Edit menu and choose "Select All".

Edit	
Undo	⌘Z
Cut	⌘H
Copy	⌘C
Paste	⌘V
Clear	
Select All	⌘A
Delete...	⌘K

5.3 Quitting the Browser

To quit the E2 Browser, pull down the File menu to select "Quit" or click the close box in the Main dialog.

File	
Open...	⌘O
Save...	⌘S
Change Folder...	⌘F
Preferences...	⌘E
Quit	⌘Q

5.4 Main dialog functions

Title bar:	Drag the title bar to move the dialog box. Click the close box on the left end of the title bar to quit the Browser.
Icon buttons:	The icon buttons can be used to access most Browser functions.
Total number of images:	Displays the total number of files in the selected folder.
Thumbnail images:	Displays thumbnail previews of image files recorded using the Nikon E2/E2s digital still camera. Depending on the size of the monitor, up to 20 or 30 images are displayed at one time from left to right and top to bottom in the order recorded. If the monitor is larger than 800 x 600 pixels, 30 images can be displayed. Otherwise, 20 images can be displayed. (Up to 999 thumbnail images can be displayed in one folder.)
Date and Time:	Gives the date (Month/Day) and time (Hour:Minute:Second) the file was created.
Scroll bar:	When all files cannot be displayed at one time, click the scroll bar or arrow buttons to view the remaining thumbnails.
Nikon logo:	Clicking the Nikon logo displays the About dialog. The About dialog gives a list of icon buttons together with a brief description of their functions.

5.5 Icon buttons

The icon buttons are listed below, together with their functions. Click the icon button once to perform the associated operation.



Source folder icon

Click this button to choose the image folder to be displayed in the Main dialog box.



Duplicate icon

Saves selected images.



Delete icon

Deletes selected images.



Information icon

Gives the attribute information for selected images.



Open with.. icon

Click this button to open selected images in another application.



Preferences icon

Click this button to specify how images will be saved and what application will be used to open image files.



Refresh thumbnail icon

Updates the thumbnail images in the Main dialog box.

6. E2 Browser Operation

Browser functions can be performed using the menus or icon buttons. Before starting the E2 browser, insert the memory card containing the image files in the PC card drive and make sure that the PC memory icon is displayed on the desktop. Check to be sure that the write-protect switch is off before inserting the card in the drive.



6.1 Displaying images

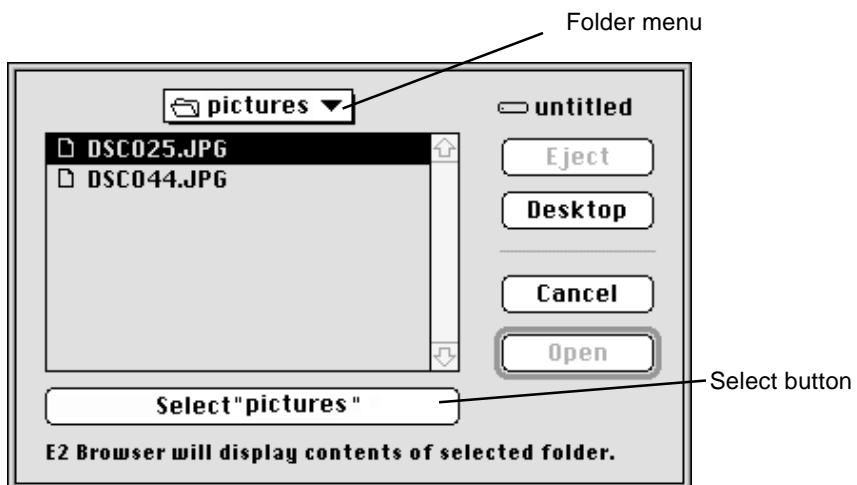
This section explains how to select the folder containing the images to be displayed.

File	
Open...	⌘O
Save...	⌘S
Change Folder...	⌘F
Preferences...	⌘E
Quit	⌘Q



Source folder icon

Pull down the File menu to select “Change Folder ...” or click the Source folder icon in the Main dialog box. The Folder dialog will be displayed.



Select a folder a folder containing image files from the Folder menu and click the Select button. Once a folder has been selected, thumbnail previews of the files in the folder will be displayed in the Main dialog box.

Folder dialog buttons:

“Eject”	Ejects removable disk media.
“Desktop”	Click this button to view the contents of the desktop folder.
“Cancel”	Closes the Folder dialog without changing folders.
“Open”	Opens the selected folder.

6.2 Saving images

This section explains how to save selected images to a local disk.



Duplicate icon

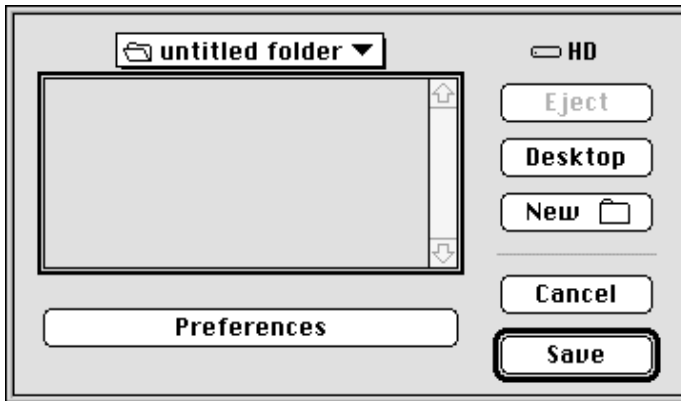
Select images to be saved from the Main dialog box, then pull down the File menu to select “Save...” or click the Duplicate icon in the Main dialog box. The Save dialog will be displayed.

If two or more thumbnail images are selected, the Browser saves the images in the order recorded.

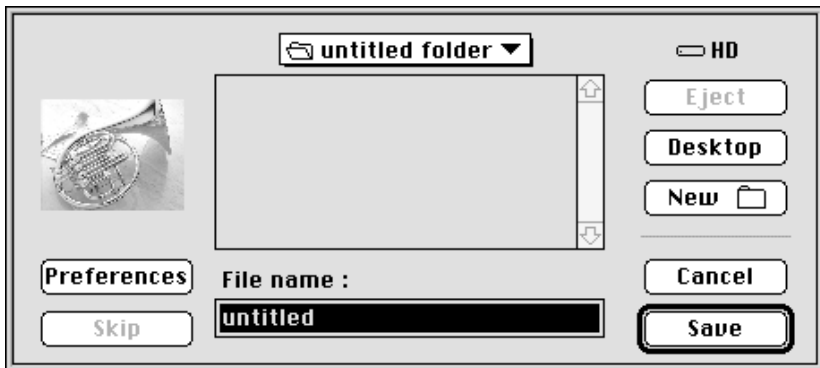
How files will be named and stored depends on the settings in the Preferences dialog box (see 6.6, “Preferences”). The contents of the Save dialog will differ depending on whether the naming method is “Automatic,” “No change,” or “Manual.” To choose a naming method, click “Preferences” in the Save dialog box.

6. E2 Browser Operation

The Save dialog when “Automatic” or “No change” has been chosen as the naming method:



The Save dialog when “Manual” has been chosen as the naming method:



Click “Preferences” to bring up the Preferences dialog, which offers a choice of file formats and naming methods (see 6.6, “Preferences”). When the naming method is “Manual,” the image will be saved under the name entered in the “File name” text box. If “Automatic” has been chosen the file will be saved under a computer-generated name, while choosing “No change” results in the file being saved under the name assigned by the E2/E2s.

After selecting a folder and, if necessary, specifying a file name, click “Save” to save all selected images (“Automatic” or “No change”) or the image currently displayed in the Save dialog’s preview window (“Manual”).

Save dialog buttons:

“Eject”	Ejects removable disk media.
“Desktop”	Click this button to view the contents of the desktop folder.
“New folder”	Creates a new folder.
“Cancel”	Cancels the operation.
“Save”	Saves the selected images.
“Skip”	When the naming method is “Manual,” this button will be displayed to allow you to pass over the current image without saving it.

6.3 Deleting images

This section explains how to delete selected images.

Edit	
Undo	⌘Z
Cut	⌘H
Copy	⌘C
Paste	⌘V
Clear	
Select All	⌘A
Delete...	⌘K



Delete icon

Select images to be deleted from the Main dialog box, then pull down the Edit menu to select “Delete...” or click the Delete icon in the Main dialog box. The Delete dialog will be displayed.

6. E2 Browser Operation

If two or more thumbnails are selected, the Browser will delete the files in the order recorded.

Note: *Files deleted using this function are not sent to the Trash and cannot be recovered.*



Delete dialog buttons:

- | | |
|--------------|---|
| “Delete” | Deletes the image currently previewed in the Delete dialog box. |
| “Cancel” | Returns you to the Main dialog box without deleting further images. Images that had already been deleted before the “Cancel” button was pressed will not be restored. |
| “Skip” | When two or more items remain to be deleted, clicking “Skip” allows you to move to the next item without deleting the image currently previewed in the Delete dialog box. |
| “Delete all” | Deletes all selected images. |

6.4 Attribute information

Attribute information for each image is recorded on the E2/E2s PC memory card. This section explains how to display the attribute information for selected images.

Browser	
Attribute Information...	⌘I
Deliver Images	⌘G
Refresh	⌘R



Information icon

In the Main dialog box, select the images for which you want attribute information. Then select “Attribute information...” from the Browser menu or click the Information icon in the Main dialog box. The Attribute Information dialog will be displayed.

When two or more images are selected, the Browser will display the attribute information for each image in succession, starting from the earliest image and continuing in the order the images were recorded.



The Attribute Information dialog gives the file name and date and time of recording, as well as the image quality (HI/FINE/NORMAL/BASIC), shutter speed, and aperture settings used to record the image.

6. E2 Browser Operation

Attribute Information dialog buttons:

“Next image”	Clicking this button displays the attribute information for the next image selected.
“Exit”	Closes the Attribute Information dialog and returns you to the Main dialog box.

6.5 Delivering images to other applications

Selected images can be delivered to an application such as Adobe Photoshop which supports AppleEvent and JPEG and PICT formats. If the application is not running at the time the images are delivered, it will be launched automatically. The destination application for this operation is set through the Preferences dialog (see 6.6, “Preferences”).



Open with... icon

In the Main dialog box, select the images to be delivered to the other application. Pull down the Browser menu to select “Deliver Images” or click the Open with... icon in the Main dialog box. Copies of the selected images will then be opened in the destination application.

So that the original image files will not be affected, the Browser saves copies of the images to a folder named “To *name of application*” and located in the E2Browser folder. The file names will be those of the original images with the first two letters replaced by “AP”. Compressed images (i.e., images recorded at an image setting of BASIC, NORMAL, or FINE) will be stored in JPEG format (the same as that used on the memory card), while uncompressed (HI image quality) images will be stored in the PICT format. These copies remain as back-ups after the destination application has closed and must be deleted manually when no longer needed.

6.6 Preferences

The Preferences dialog box allows you to select the naming method and file format used when files are saved, and to specify the application to which images will be delivered.

File	
Open...	⌘O
Save...	⌘S
Change Folder...	⌘F
Preferences...	⌘E
Quit	⌘Q



Preferences icon

Pull down the File menu to select “Preferences...” or click the Preferences icon in the Main dialog box. The Preferences dialog will be displayed. The Preferences dialog can also be displayed by clicking the “Preferences” button in the Save dialog box.

Image

How to decide file name: No change ▼

Image mode "HI"
Storing method: No conversion ▼

Image mode
BASIC/NORMAL/FINE
Storing method: No conversion ▼

Image Delivering

Launch Application: Adobe Photoshop 2.5

Currently, images will be delivered to selected application saved in a new folder named "To Adobe Photoshop 2.5" in the E2 Browser application folder.

Select application...
Cancel
OK

6. E2 Browser Operation

Items in the Preferences dialog box :

How to decide file name: Specifies method used to name files. The following options can be chosen from the pop-up menu:

Automatic: A name is automatically assigned according to the computer's internal clock calendar and the format (JPG/TIF/PICT) in use at the time the file is saved.

No change: Files are saved under the name assigned by the E2/E2s when the image was originally recorded.

Manual: A user-specified file name is used.

Image mode "HI" Storing method:

Specifies the format to be used when saving uncompressed images. The associated pop-up menu offers a choice of "No conversion" (TIFF) or "PICT".

Image mode BASIC/NORMAL/FINE Storing method:

Specifies the format for compressed images. The associated pop-up menu offers a choice of "No conversion" (JPEG) or "PICT".

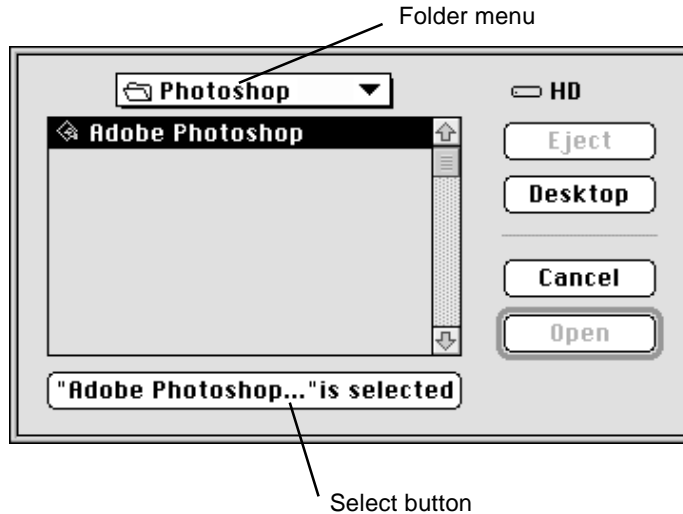
Preferences dialog buttons :

"Cancel" Cancels any changes to preferences and closes the Preferences dialog box.

"OK" Updates the preferences and closes the Preferences dialog box.

"Select application ..." Opens the Application Selection dialog box (shown opposite) from which a destination application can be chosen (this is the application that will open when the Open with... icon is clicked or "Deliver Image" is chosen from the Browser menu). This option is not available when the Preferences dialog has been opened from the Save dialog box.

Application selection menu



Navigate to the folder containing the destination application using the Folder menu, then select the desired application from the files in the list box and click the Select button. The Application Selection dialog will close, causing the Preferences dialog to be displayed once more.

Function of each button:

- | | |
|-----------|---|
| "Eject" | Ejects removable disk media. |
| "Desktop" | Click this button to view the contents of the desktop folder. |
| "Cancel" | Closes the Application Selection dialog without changing the destination application. |
| "Open" | Opens the selected folder. |

Preferences are stored in the "E2 Browser Prefs" file in the Preferences folder, which in turn may be found in the System Folder. The settings in this file are used when the Browser is launched.

6. E2 Browser Operation

6.7 Refreshing the thumbnail images

Updates the thumbnail previews in the Main dialog box.



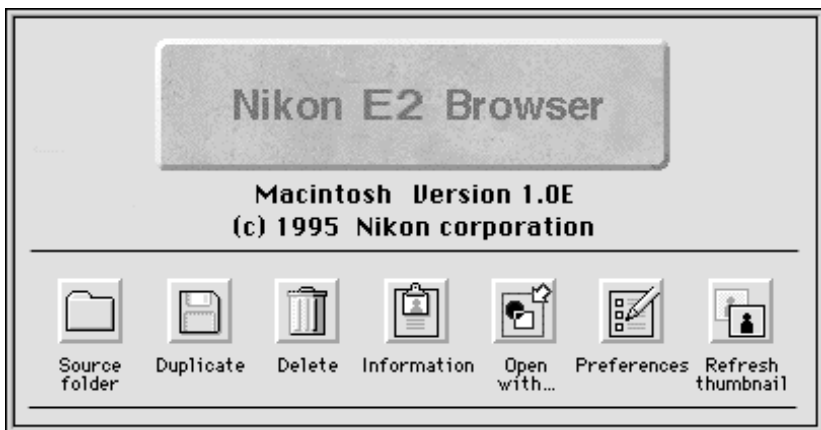
Refresh thumbnail icon

To update the display, pull down the Browser menu to select “Refresh” or click the Refresh thumbnail icon in the Main dialog box.

6.8 About dialog



The About dialog can be displayed by selecting “About Nikon E2 Browser...” from the Apple menu or clicking the Nikon logo in the Main dialog box.



7. Troubleshooting

When an error occurs, one of the following error messages will be displayed. Take the action prescribed in the message or in the table below.

Message: An unexpected error has occurred. Operation cannot continue. The E2 Browser will quit. Contact Nikon Technical Support.

Message: The folder contents will be read and displayed, but the selected media is write-protected. Operation cannot continue.

Action: Unlock the file or release the media's write-protection tab.

Message: The disk drive does not have enough available space to save files.

Action: Increase space on the hard disk by erasing unnecessary files.

Message: The disk drive is locked and the selected files cannot be saved.

Action: Release the media's write protection tab.

Message: Operation cannot continue because file is damaged.

Action: Confirm whether the selected file exists or not.

Message: Operation cannot continue because there is insufficient memory. The E2 Browser will quit.

Action: Increase the amount of memory available to the E2 Browser following the steps given on page 9 of this manual.

7. Troubleshooting

Message: Due to changes in the environment, operation cannot continue. The E2 Browser will quit. The E2 Browser needs System 7.1 and QuickTime 2.0 or a later versions.

Action: The E2 Browser needs System 7.1 or higher and QuickTime 2.0. Confirm that you have satisfied the system requirements given in 3, “System Requirements”.

Message: Operation cannot continue because an error occurred when the image delivery application was launched.

Action: Increase the amount of memory available to the E2 Browser or the application to which images are to be delivered.

Index

A

- About dialog 24
- About Nikon E2 Browser... 24
- Application selection menu 23
- Attribute information 19
- Attribute information... 19

C

- Change Folder ... 14
- Custom Install 5

D

- Date and Time 12
- Delete menu 17
- Delete... 17
- Deleting images 17
- Delivering of images 20
- Displaying images 14

E

- E2 Browser icon 9, 10
- Easy Install 5
- Extensions folder 3

F

- Folder menu 14
- Functions 1

G

- Get Info 9

H

- How to decide file name 22

I

- Icon buttons 12, 13
 - Delete icon 13, 17
 - Duplicate icon 13, 15
 - Information icon 13, 19
 - Open with.. icon 13, 20
 - Preferences icon 13, 21
 - Refresh thumbnail icon 13, 24
 - Source folder icon 13, 14
- Image mode BASIC/NORMAL/FINE
 - Storing method 22
- Image mode "HI" Storing method 22
- Install disk 1
- installing the Nikon E2 Browser 3

M

- Mac-PC Manager 2
- Main dialog box 10
- Main dialog functions 12
- Maximum number of images 11

N

- Nikon logo 12, 24
- Nikon PC card drive ED-10 2

O

- Operation 14

P

- Package Contents 1
- Preferences 21
- Preferences menu 21

Q

- QuickTime 2
- Quitting the Browser 11

R

- Refresh 24
- Refreshing the thumbnail images 24

S

- Save menu 15
- Save... 15
- Saving images 15
- Scroll bar 12
- Selecting images 11
- Starting-up the Browser 10
- System Requirements 2

T

- Thumbnail images 12
- Title bar 12
- To cancel the selection 11
- To select all thumbnail images 11
- To select two or more thumbnail images
11
- “To xxx” folder 20
- Total image number 12
- Troubleshooting 25

V

- virus checking software 3